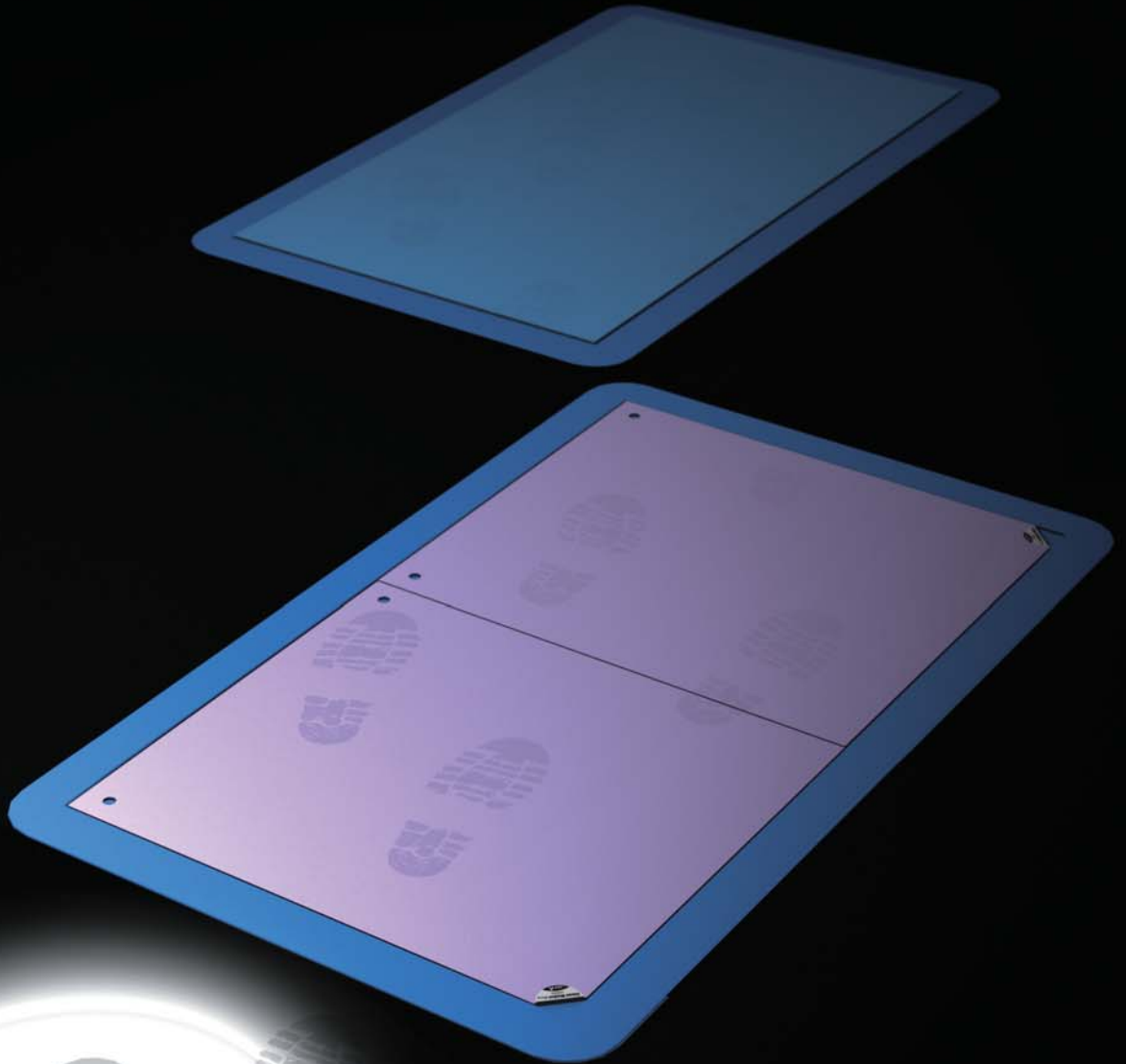


Film Free Adhesive Mat

Restore adhesiveness easily by water-washing and drying.



STAT·CLEAN **Clean Walker**

Clean Walker series

VESSEL®

Adhesive mat utilizing self-adhesiveness of high-quality urethane gel.

Clean Walker *Easy*

- Use at entrances of clean rooms, air showers and inside factories to remove dust from shoe soles
- Use indoors to clean trolley wheels

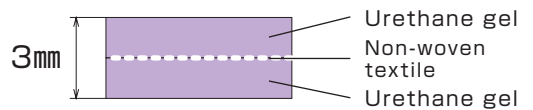
NEW

RoHS

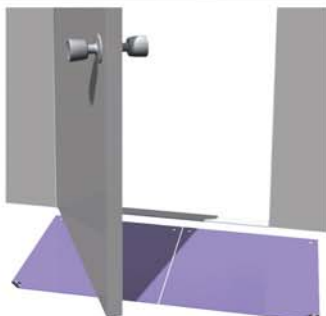
Free of all designated hazardous substances specified under RoHS Directives.



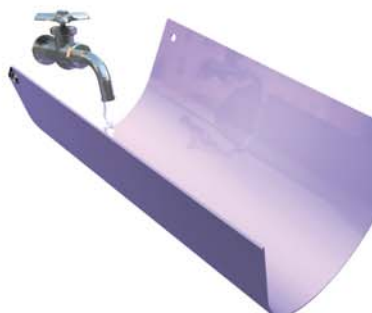
CW-900EZ
450 × 500 mm
2 pieces / set



Tear resistant with the three-layer structure using non-woven fabrics. The mats can be easily joined in the same fashion as floor tiles.



3 mm thickness doesn't block doors



Take the mat out of the floor and wash it with water



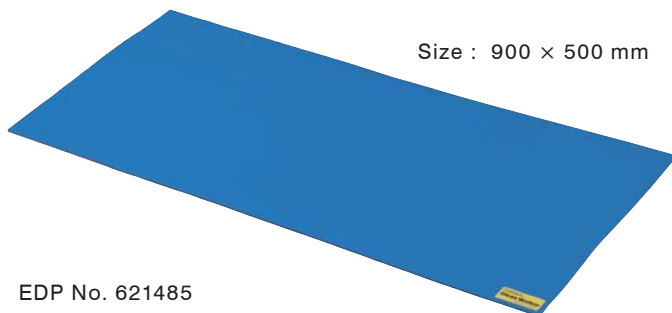
Hang from hook holes to dry off



Labels indicate front and back sides (A / B sides)

High elasticity
Outstanding dust collection
performance

CW-900B

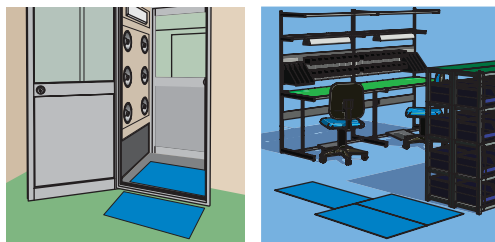


Size : 900 × 500 mm

EDP No. 621485

The 5mm high elasticity mat powerfully catches dust from shoe soles.

Collected dust can be easily wiped off with a wet cloth. Both sides are usable, allowing you to save on running costs. For indoor use (especially in front of clean rooms)



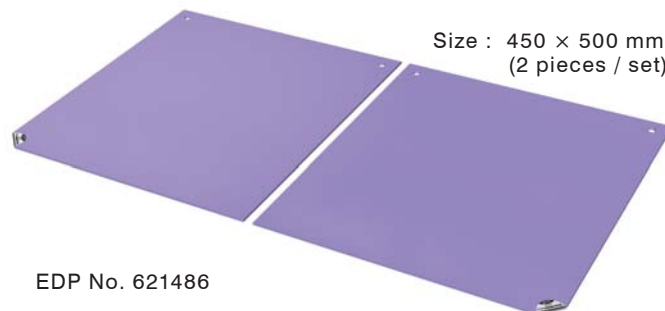
Specifications

 Eco-friendly product

Product name	Clean Walker
Material	Polyurethane
Color	Blue
Hardness	Shore A 8
Tensile strength	191.1 N / mm ²
Tear resistance	44.2 N / mm
Heat resistance	- 30 to 80 ° C
Adherence	0.045 N / 25 mm (180° peel)
Conductivity	Insulator
Size	W 900 × L 500 × T 5 mm
Weight	2.4 kgs/piece
Outer package	2 pieces
RoHs	Does not contain six restricted substances

Easy maintenance
Just 3mm thickness

CW-900EZ



Size : 450 × 500 mm
(2 pieces / set)

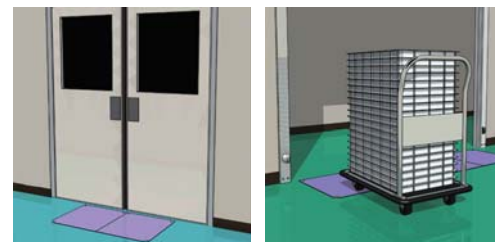
EDP No. 621486

Non-woven textiles are sandwiched with a 3mm thickness to attain a high strength and resist tears even under the pressure of trolleys.

The 450mm x 500mm half sized mat can be easily taken up and washed with water.

Just hang the mat from the hook holes so it will dry and regain its adhesiveness.

For indoor use (especially in front of clean rooms)



Specifications

 Eco-friendly product

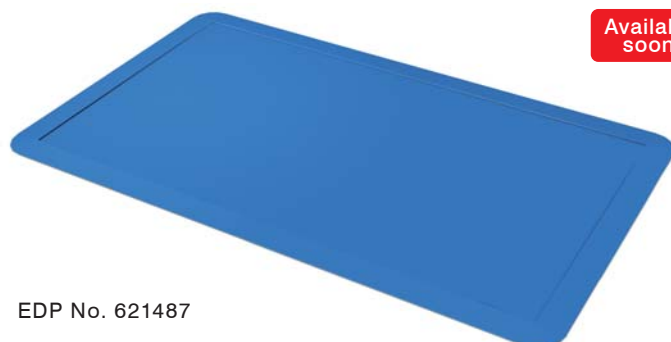
Product name	Clean Walker Easy (2 pieces / set)
Material	Polyurethane, non-woven textiles
Color	Light purple
Hardness	Shore A 8
Tensile strength	1.65 N / mm ²
Tear resistance	28.7 N / mm
Heat resistance	- 30 to 80 ° C
Adherence	0.045 N / 25 mm (180° peel)
Conductivity	Insulator
Size	W 450 × L 500 × T 3 mm
Weight	1.6 kg (2 pieces)
Outer package	5 sets
RoHs	Does not contain 6 restricted substances

Inclined tray for easy trolley access

<Exclusive to Clean Walker>
Size : 1000 × 600 mm

CW-T900

Available soon.



EDP No. 621487

This dedicated tray is perfect for the Clean Walker size.

The inclination allows trolleys to pass over without catching. Clean Walker mats can be removed with a little pull.



Inclined tray for easy trolley access
(Applied to the CW-900B and CW-900EZ)

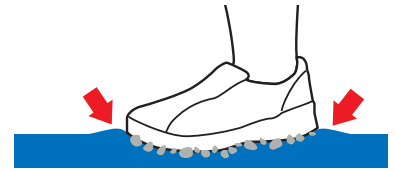
Specifications

Product name	Clean Walker Tray
Material	EPDM + SBR
Color	Blue
Hardness	Shore A 55
Conductivity	Insulator
Size	W 1000 × L 600 × T 5 mm
Applied size	W 900 × L 500 × D 3 mm
Weight	2.45 kg
RoHs	Does not contain 6 restricted substances

Comparison of Clean Walker and a peel-off mat

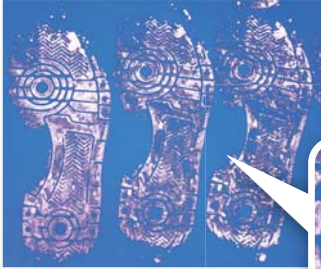
Test performed with the CW-900B.

Clean Walker catches more effectively dust from the shoe sole grooves and the trolley wheels, thanks to the urethane gel, having characteristics to change forms according to objects passing over the mat.



Dirt on the shoe soles

Clean Walker Clean Walker



It shows sharp patterns of shoe sole!



After 10-time steps on "Clean Walker"

The shoe sole looks whiter as "Clean Walker" catches dust even in these tiny grooves.

VS

Conventional peel-off mats



The patterns of shoe sole are uneven.



After 10-time steps on a peel-off mat

Dust in the grooves has not been caught and left on the sole.

Dirt on the trolley wheels

Clean Walker Clean Walker



Even the wheel edges have become cleaned off.



VS

Conventional peel-off mats



Dust on the wheel edges still remains.



WARNING

- Read the instruction manual carefully before using the unit.
- Use this mat indoors where it will not be directly subject to ultraviolet rays. Do not use in an area where the temperature may exceed 60 °C.
- Do not use the mat where forklifts or other equipment transporting heavy objects may pass over it.

- Do not rub the mat with a brush or dry rag because it may scratch the surface and degrade the adhesive force.
- Avoid sand or metal chips because they may become embedded in the mat and cause damage.
- To prevent accidents such as falls or slipping and to prevent the contamination from spreading do not use the mat in a wet state.

VESSEL CO., INC.

17-25, Fukae-Kita 2-chome, Higashinari-ku, Osaka 537-0001 JAPAN
Tel : +81(0)6 6976 7778 Fax : +81(0)6 6972 9441

VESSEL EUROPE

6, avenue du 1er Mai, ZAE Les Glaises, 91120 Palaiseau FRANCE
Tel : +33(0)1 69 19 17 42 Fax : +33(0)1 69 19 42 20

E-mail : export@vessel.co.jp URL : <http://www.vessel.co.jp/english/>

- For improvement, the above specifications, measurements, and prices are subject to change without notice.

Distributed by

Printed in Japan

12032821.015